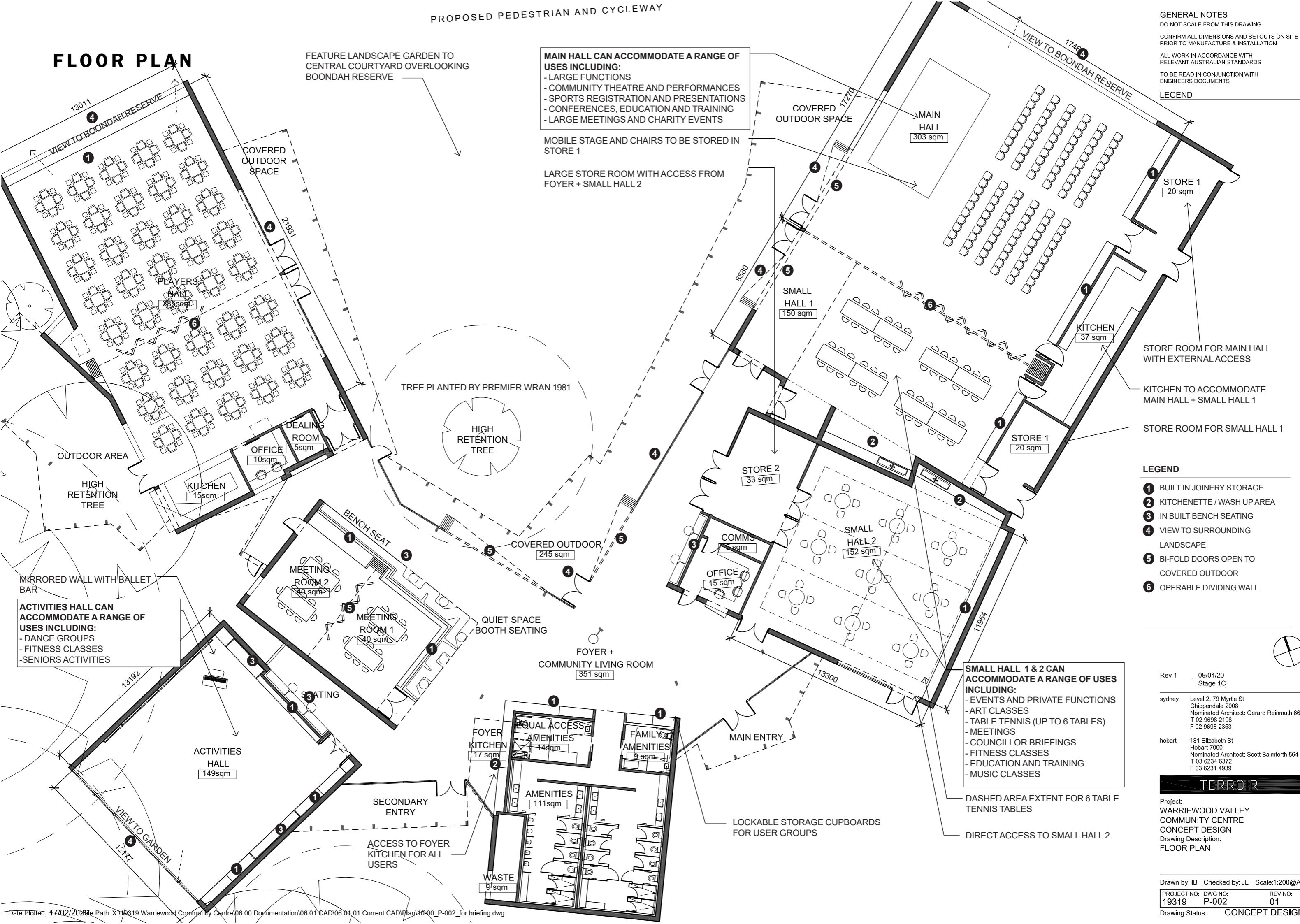


FLOOR PLAN

GENERAL NOTES
 DO NOT SCALE FROM THIS DRAWING
 CONFIRM ALL DIMENSIONS AND SETOUTS ON SITE PRIOR TO MANUFACTURE & INSTALLATION
 ALL WORK IN ACCORDANCE WITH RELEVANT AUSTRALIAN STANDARDS
 TO BE READ IN CONJUNCTION WITH ENGINEERS DOCUMENTS
LEGEND



MAIN HALL CAN ACCOMMODATE A RANGE OF USES INCLUDING:
 - LARGE FUNCTIONS
 - COMMUNITY THEATRE AND PERFORMANCES
 - SPORTS REGISTRATION AND PRESENTATIONS
 - CONFERENCES, EDUCATION AND TRAINING
 - LARGE MEETINGS AND CHARITY EVENTS

MOBILE STAGE AND CHAIRS TO BE STORED IN STORE 1

LARGE STORE ROOM WITH ACCESS FROM FOYER + SMALL HALL 2

ACTIVITIES HALL CAN ACCOMMODATE A RANGE OF USES INCLUDING:
 - DANCE GROUPS
 - FITNESS CLASSES
 - SENIORS ACTIVITIES

SMALL HALL 1 & 2 CAN ACCOMMODATE A RANGE OF USES INCLUDING:
 - EVENTS AND PRIVATE FUNCTIONS
 - ART CLASSES
 - TABLE TENNIS (UP TO 6 TABLES)
 - MEETINGS
 - COUNCILLOR BRIEFINGS
 - FITNESS CLASSES
 - EDUCATION AND TRAINING
 - MUSIC CLASSES

- LEGEND**
- 1 BUILT IN JOINERY STORAGE
 - 2 KITCHENETTE / WASH UP AREA
 - 3 IN BUILT BENCH SEATING
 - 4 VIEW TO SURROUNDING LANDSCAPE
 - 5 BI-FOLD DOORS OPEN TO COVERED OUTDOOR
 - 6 OPERABLE DIVIDING WALL

Rev 1 09/04/20 Stage 1C

sydney Level 2, 79 Myrtle St Chippendale 2008
 Nominated Architect: Gerard Reinmuth 6629
 T 02 9698 2198
 F 02 9698 2353

hobart 181 Elizabeth St Hobart 7000
 Nominated Architect: Scott Balmforth 564
 T 03 6234 6372
 F 03 6231 4939

TERROIR
 Project: WARRIEWOOD VALLEY COMMUNITY CENTRE
 CONCEPT DESIGN
 Drawing Description: FLOOR PLAN

Drawn by: IB Checked by: JL Scale: 1:200@A3

PROJECT NO: 19319 DWG NO: P-002 REV NO: 01

Drawing Status: CONCEPT DESIGN