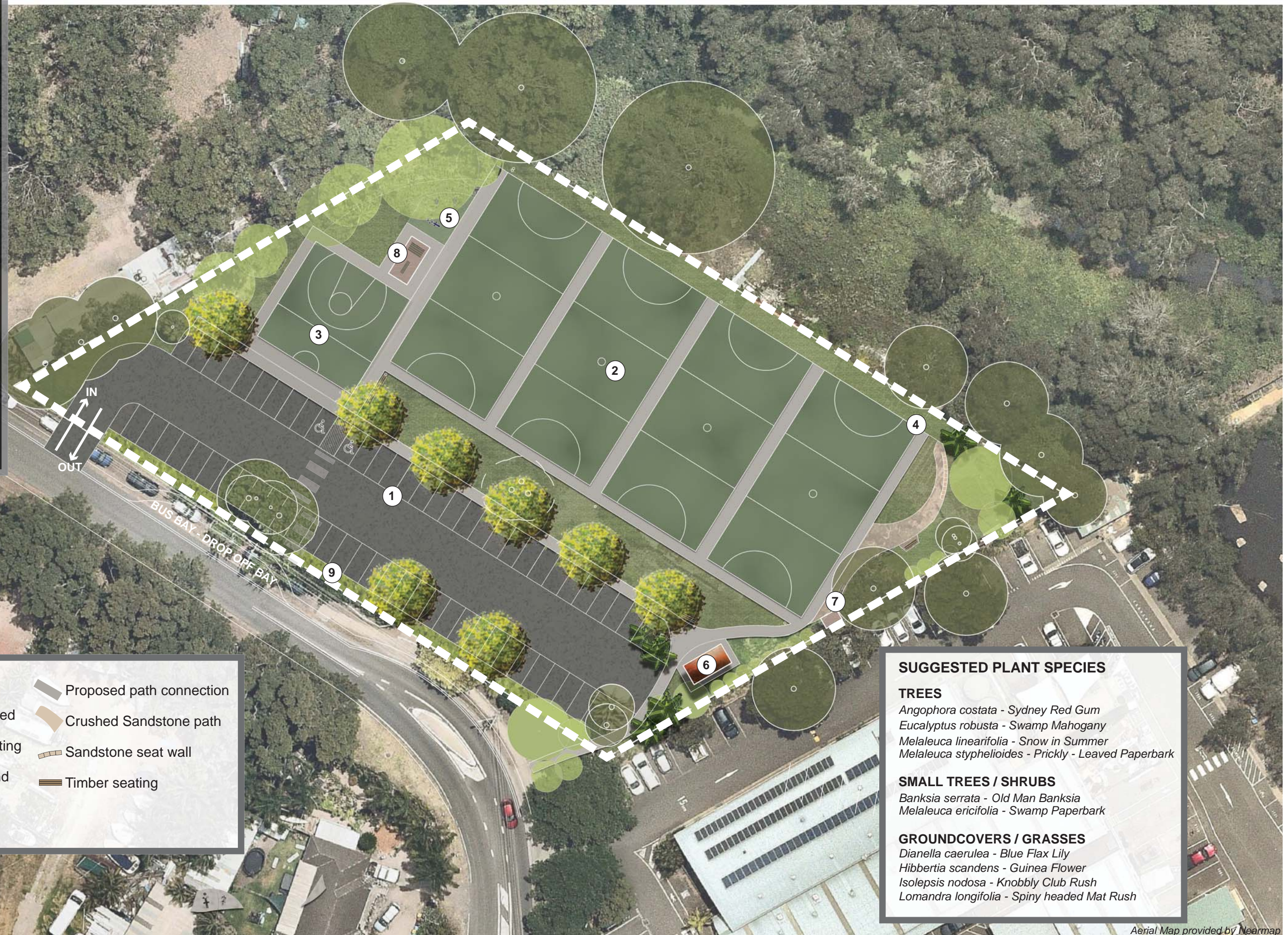


## KEY FEATURES

- 1 57 CAR PARKING SPACES
- 2 4 NETBALL & MULTI-USE COURTS E.G. FUTSAL
- 3 1/2 BASKETBALL COURT
- 4 LIGHTING TO COURT AREAS AND CARPARK
- 5 FITNESS AREA
- 6 AMENITIES INCLUDING 1 X SINGLE UNSEX, 1 X ACCESSIBLE UNISEX CUBICLE
- 7 EQUIPMENT STORAGE (LOCKABLE)
- 8 PICNIC SHELTER / DRINK STATION / SEATING
- 9 RAINGARDEN BED TO CARPARK FRONTAGE



### Legend

-  Existing Trees to be retained and protected
-  Proposed Tree Planting
-  Low shrub, grass and groundcovers
-  Grassed Areas
-  Proposed path connection
-  Crushed Sandstone path
-  Sandstone seat wall
-  Timber seating

### SUGGESTED PLANT SPECIES

#### TREES

- Angophora costata* - Sydney Red Gum
- Eucalyptus robusta* - Swamp Mahogany
- Melaleuca linearifolia* - Snow in Summer
- Melaleuca styphelioides* - Prickly - Leaved Paperbark

#### SMALL TREES / SHRUBS

- Banksia serrata* - Old Man Banksia
- Melaleuca ericifolia* - Swamp Paperbark

#### GROUNDCOVERS / GRASSES

- Dianella caerulea* - Blue Flax Lily
- Hibbertia scandens* - Guinea Flower
- Isolepis nodosa* - Knobbly Club Rush
- Lomandra longifolia* - Spiny headed Mat Rush

Aerial Map provided by Nearmap

