

Basin at Narrabeen RSL, Pipe Diversion along Tatiara Cres and Nareen Parade to Open Channel



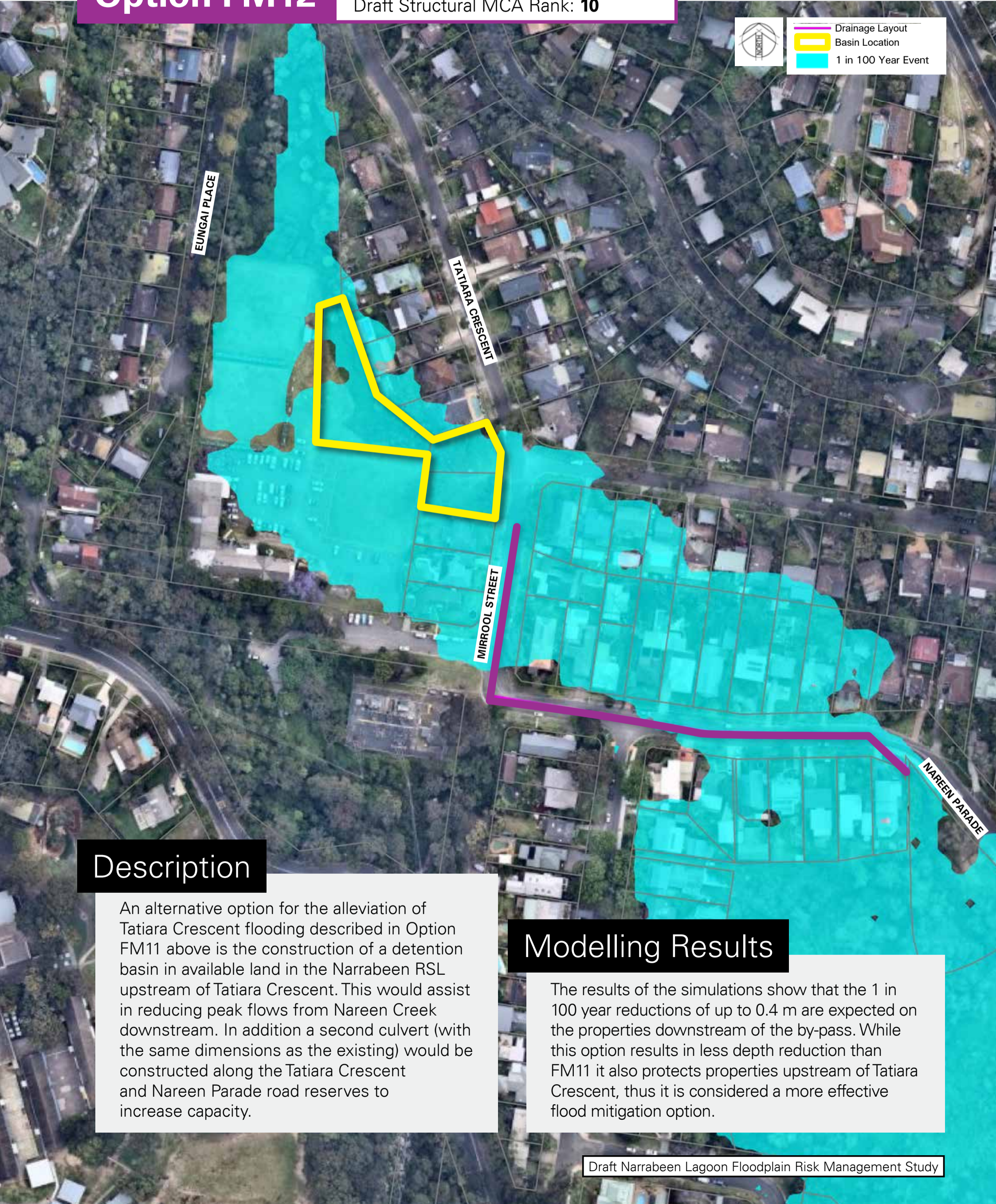
northern
beaches
council

Option FM12

Capital Costs (excl. GST): **\$6,595,000**
Draft Structural MCA Rank: **10**



Drainage Layout
Basin Location
1 in 100 Year Event



Description

An alternative option for the alleviation of Tatiara Crescent flooding described in Option FM11 above is the construction of a detention basin in available land in the Narrabeen RSL upstream of Tatiara Crescent. This would assist in reducing peak flows from Nareen Creek downstream. In addition a second culvert (with the same dimensions as the existing) would be constructed along the Tatiara Crescent and Nareen Parade road reserves to increase capacity.

Modelling Results

The results of the simulations show that the 1 in 100 year reductions of up to 0.4 m are expected on the properties downstream of the by-pass. While this option results in less depth reduction than FM11 it also protects properties upstream of Tatiara Crescent, thus it is considered a more effective flood mitigation option.